



**MANDRINERIA  
PER MACCHINE TRADIZIONALI E CNC  
PER LA LAVORAZIONE DEL LEGNO**

**TOOL HOLDERS  
FOR TRADITIONAL AND CNC  
WOODWORKING MACHINES**

16



**16**





16

|   | pagina<br>page |  |
|---|----------------|--|
| <b>PORTAPINZE - PORTAFRESE</b><br><b>COLLET CHUCKS - MILLING CHUCKS</b>   |                |  |
| Mandrini portapinze con attacco HSK 50/63<br>DIN 69893<br>Collect chucks<br>HSK 50/63 - DIN 69893                   | 4              |  |
| Mandrini portapinze con attacco cono morse<br>Morse taper<br>collet chucks  | 4              |  |
| Mandrini portapinze con attacco ISO 30/40<br>Collet chucks<br>ISO 30/40   | 5              |  |
| Mandrini portapinze con attacco ISO 30<br>Collet chucks<br>ISO 30   | 5              |  |
| Mandrini portapinze con attacco ISO 30/40 flangia di cambio utensile ø 58<br>Collet chucks ISO 30/40<br>flange ø 58 | 6              |  |
| Mandrini portapinze con attacco ISO 30 a flangia dentata<br>Collet chucks ISO 30<br>with toothed flange             | 6              |  |
| Mandrini portafrese con attacco HSK 50/63<br>DIN 69893<br>Milling chuck HSK 50/63<br>DIN 69893                      | 6-7            |  |
| Mandrini portafrese con attacco ISO 30/40<br>Milling chuck<br>ISO 30/40   | 8-9            |  |
| Mandrini portafrese con attacco ISO 30 a flangia dentata<br>Milling chuck ISO 30<br>with toothed flange             | 9              |  |

|   | pagina<br>page |  |
|---|----------------|--|
| <b>RICAMBI</b><br><b>SPARE PARTS</b>                                      |                |  |
| Tiranti di aggancio per mandrini<br>Pull studs for chucks                 | 10             |  |
| Pinze e ghiera tipo ER DIN 6499<br>Collets and nuts<br>ER DIN 6499        | 11             |  |
| Pinze e ghiera tipo EOP DIN 6388<br>Collets and nuts<br>EOP DIN 6388      | 12             |  |
| Pinze e ghiera tipo ETS<br>Collets and nuts ETS                           | 12-13          |  |
| Ghiere di contrasto<br>Spacers  | 13             |  |
| Viti<br>Screws  | 13             |  |
| Flange di bloccaggio per portafrese<br>Locking flanges for milling chucks | 14             |  |
| Chiavi per ghiera<br>Wrenches for nuts                                    | 14             |  |
| Smontaconi<br>Tool setting stands   | 14             |  |



## MANDRINI PORTAPINZE COLLET CHUCKS

### MANDRINI PORTAPINZE ATTACCO HSK DIN 69893 COLLET CHUCKS HSK DIN 69893

| ART.                | D2   | H1<br>mm | H<br>mm | D<br>mm | D1<br>mm | Pinza<br>Collet | Rot.<br>Rev. |
|---------------------|------|----------|---------|---------|----------|-----------------|--------------|
| <b>22250E32D</b>    | 50/E | 25       | 73      | 3-20    | 50       | ER/32           | dx / r       |
| <b>22250E32SX</b>   | 50/E | 25       | 73      | 3-20    | 50       | ER/32           | sx / l       |
| <b>22250E40D</b>    | 50/E | 25       | 75      | 4-30    | 63       | ER/40           | dx / r       |
| <b>22250E40SX</b>   | 50/E | 25       | 75      | 4-30    | 63       | ER/40           | sx / l       |
| <b>22250EEOP25</b>  | 50/E | 25       | 90      | 2-25    | 60       | EOP/25          | dx / r       |
| <b>22263E32D</b>    | 63/E | 32       | 78      | 3-20    | 50       | ER/32           | dx / r       |
| <b>22263E32SX</b>   | 63/E | 32       | 78      | 3-20    | 50       | ER/32           | sx / l       |
| <b>22263E40D</b>    | 63/E | 32       | 75      | 4-30    | 63       | ER/40           | dx / r       |
| <b>22263E40SX</b>   | 63/E | 32       | 75      | 4-30    | 63       | ER/40           | sx / l       |
| <b>22263EEOP25D</b> | 63/E | 32       | 90      | 2-25    | 60       | EOP/25          | dx / r       |

Per macchina / For machine: CMS, Uniteam

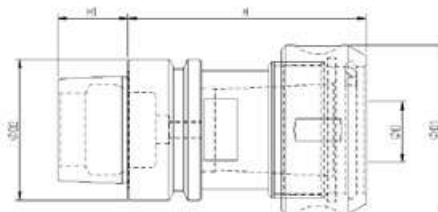
| ART.                | D2   | H1<br>mm | H<br>mm | D<br>mm | D1<br>mm | Pinza<br>Collet | Rot.<br>Rev. |
|---------------------|------|----------|---------|---------|----------|-----------------|--------------|
| <b>22250F32D</b>    | 50/F | 20       | 73      | 3-20    | 50       | ER/32           | dx / r       |
| <b>22250F32SX</b>   | 50/F | 20       | 73      | 3-20    | 50       | ER/32           | sx / l       |
| <b>22250F40D</b>    | 50/F | 20       | 75      | 4-30    | 63       | ER/40           | dx / r       |
| <b>22250F40SX</b>   | 50/F | 20       | 75      | 4-30    | 63       | ER/40           | sx / l       |
| <b>22250FEOP25D</b> | 50/F | 20       | 90      | 2-25    | 60       | EOP/25          | dx / r       |

Per macchina / For machine: Biesse, SCM, Morbidelli, Eima, Dubus, Weeke

| ART.               | D2   | H1<br>mm | H<br>mm | D<br>mm | D1<br>mm | Pinza<br>Collet | Rot.<br>Rev. |
|--------------------|------|----------|---------|---------|----------|-----------------|--------------|
| <b>22263F32D</b>   | 63/F | 25       | 73      | 3-20    | 50       | ER/32           | dx / r       |
| <b>22263F32SX</b>  | 63/F | 25       | 73      | 3-20    | 50       | ER/32           | sx / l       |
| <b>22263F40D</b>   | 63/F | 25       | 80      | 4-30    | 63       | ER/40           | dx / r       |
| <b>22263F40SX</b>  | 63/F | 25       | 80      | 4-30    | 63       | ER/40           | sx / l       |
| <b>22263FEOP25</b> | 63/F | 25       | 90      | 2-25    | 60       | EOP/25          | dx / r       |

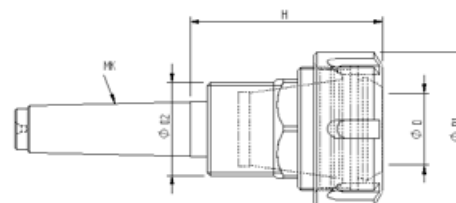
Per macchina / For machine: Biesse, Eima, Homag, SCM, Ima (da 9/94), Weeke, Dubus, Busellato

BILANCIATI FINO A G.2,5 - 24.000 RPM a richiesta  
BALANCED TO 24,000 RPM at G.2,5 on request



### MANDRINI PORTAPINZE ATTACCO CONO MORSE MORSE TAPER COLLET CHUCKS

| ART.                | CM<br>MT | H<br>mm | D<br>mm | D1<br>mm | D2<br>mm | Pinza<br>Collet | Rot.<br>Rev. |
|---------------------|----------|---------|---------|----------|----------|-----------------|--------------|
| <b>2220232D</b>     | 2        | 62      | 3-20    | 50       | M30x1,5  | ER/32           | dx / r       |
| <b>2220232SX</b>    | 2        | 62      | 3-20    | 50       | M30x1,5  | ER/32           | sx / l       |
| <b>2220232DF20</b>  | 2        | 85      | 3-20    | 50       | W20x14   | ER/32           | dx / r       |
| <b>2220232SXF20</b> | 2        | 85      | 3-20    | 50       | W20x14   | ER/32           | sx / l       |
| <b>2220332D</b>     | 3        | 70      | 3-20    | 50       | M30x1,5  | ER/32           | dx / r       |
| <b>2220332SX</b>    | 3        | 70      | 3-20    | 50       | M30x1,5  | ER/32           | sx / l       |
| <b>2220340D</b>     | 3        | 80      | 4-30    | 63       | M30x1,5  | ER/40           | dx / r       |
| <b>2220340SX</b>    | 3        | 80      | 4-30    | 63       | M30x1,5  | ER/40           | sx / l       |



## MANDRINI PORTAPINZE COLLET CHUCKS

### MANDRINI PORTAPINZE ATTACCO DIN 69871 COLLET CHUCKS DIN 69871

| ART.               | ISO | D2<br>mm | H1<br>mm | D3<br>mm | H<br>mm | D<br>mm | D1<br>mm | Pinza<br>Collet | Rot.<br>Rev. |
|--------------------|-----|----------|----------|----------|---------|---------|----------|-----------------|--------------|
| <b>2223032BSD</b>  | 30  | 31,75    | 47,8     | 50       | 50      | 3-20    | 50       | ER/32           | dx / r       |
| <b>2223032BSSX</b> | 30  | 31,75    | 47,8     | 50       | 50      | 3-20    | 50       | ER/32           | sx / l       |
| <b>2223040BSD</b>  | 30  | 31,75    | 47,8     | 50       | 57      | 4-30    | 63       | ER/40           | dx / r       |
| <b>2223040BSSX</b> | 30  | 31,75    | 47,8     | 50       | 57      | 4-30    | 63       | ER/40           | sx / l       |

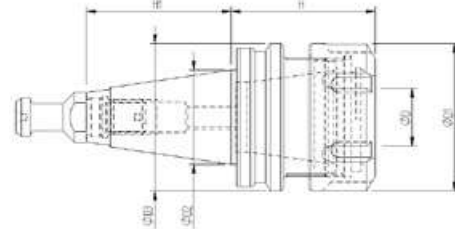
Per macchina / For machine: Biesse, Cosmec, Masterwood

| ART.               | ISO | D2<br>mm | H1<br>mm | D3<br>mm | H<br>mm | D<br>mm | D1<br>mm | Pinza<br>Collet | Rot.<br>Rev. |
|--------------------|-----|----------|----------|----------|---------|---------|----------|-----------------|--------------|
| <b>2223032D</b>    | 30  | 31,75    | 47,8     | 50       | 68      | 3-20    | 50       | ER/32           | dx / r       |
| <b>2223032SX</b>   | 30  | 31,75    | 47,8     | 50       | 68      | 3-20    | 50       | ER/32           | sx / l       |
| <b>2223040D</b>    | 30  | 31,75    | 47,8     | 50       | 68      | 4-30    | 63       | ER/40           | dx / r       |
| <b>2223040SX</b>   | 30  | 31,75    | 47,8     | 50       | 68      | 4-30    | 63       | ER/40           | sx / l       |
| <b>22230EOP25D</b> | 30  | 31,75    | 47,8     | 50       | 70      | 2-25    | 60       | EOP/25          | dx / r       |

Per macchina / For machine: Biesse, SCM, Morbidelli, Eima, Dubus, Weeke, Alberti

| ART.               | ISO | D2<br>mm | H1<br>mm | D3<br>mm | H<br>mm | D<br>mm | D1<br>mm | Pinza<br>Collet | Rot.<br>Rev. |
|--------------------|-----|----------|----------|----------|---------|---------|----------|-----------------|--------------|
| <b>2224032D</b>    | 40  | 44,45    | 68,4     | 63,55    | 68      | 3-20    | 50       | ER/32           | dx / r       |
| <b>2224032SX</b>   | 40  | 44,45    | 68,4     | 63,55    | 68      | 3-20    | 50       | ER/32           | sx / l       |
| <b>2224040D</b>    | 40  | 44,45    | 68,4     | 63,55    | 68      | 4-30    | 63       | ER/40           | dx / r       |
| <b>2224040SX</b>   | 40  | 44,45    | 68,4     | 63,55    | 68      | 4-30    | 63       | ER/40           | sx / l       |
| <b>22240EOP25D</b> | 40  | 44,45    | 68,4     | 63,55    | 74      | 2-25    | 60       | EOP/25          | dx / r       |

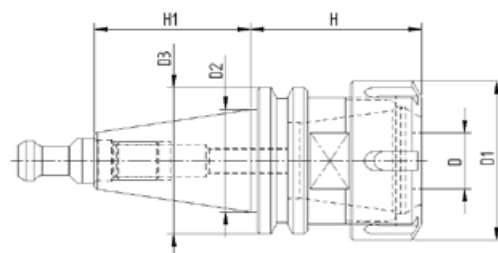
Per macchina / For machine: Biesse, SCM, Ima, Maka, Weeke, Bulleri, Reichenbacher, Stegherr  
BILANCIATI FINO A G.2,5 - 24.000 RPM a richiesta  
BALANCED TO 24,000 RPM at G.2,5 on request



### MANDRINI PORTAPINZE ATTACCO DIN 69871 COLLET CHUCKS DIN 69871

| ART.                  | ISO | D2<br>mm | H1<br>mm | D3<br>mm | H<br>mm | D<br>mm | D1<br>mm | Pinza<br>Collet | Rot.<br>Rev. |
|-----------------------|-----|----------|----------|----------|---------|---------|----------|-----------------|--------------|
| <b>2223032F46D</b>    | 30  | 31,75    | 47,8     | 46       | 60      | 3-20    | 50       | ER/32           | dx / r       |
| <b>2223032F46SX</b>   | 30  | 31,75    | 47,8     | 46       | 60      | 3-20    | 50       | ER/32           | sx / l       |
| <b>2223040F46D</b>    | 30  | 31,75    | 47,8     | 46       | 65      | 4-30    | 63       | ER/40           | dx / r       |
| <b>2223040F46SX</b>   | 30  | 31,75    | 47,8     | 46       | 65      | 4-30    | 63       | ER/40           | sx / l       |
| <b>22230EOP25F46D</b> | 30  | 31,75    | 47,8     | 46       | 70      | 2-25    | 60       | EOP/25          | dx / r       |

Per macchina / For machine: CMS  
BILANCIATI FINO A G.2,5 - 24.000 RPM a richiesta  
BALANCED TO 24,000 RPM at G.2,5 on request

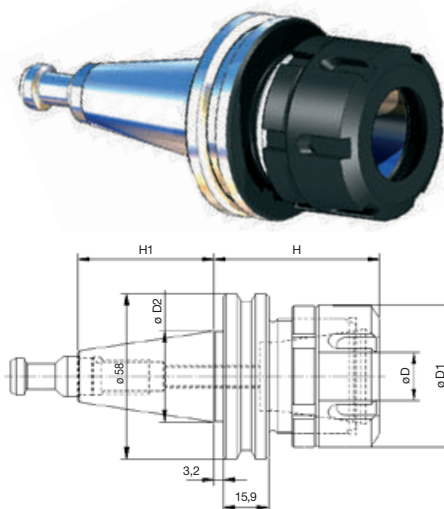


## MANDRINI PORTAPINZE - PORTAFRESE COLLET AND MILLING CHUCKS

### MANDRINI PORTAPINZE ATTACCO DIN 69871 COLLET CHUCKS DIN 69871

| ART.                  | ISO | D2<br>mm | H1<br>mm | D3<br>mm | H<br>mm | D<br>mm | D1<br>mm | Pinza<br>Collet | Rot.<br>Rev. |
|-----------------------|-----|----------|----------|----------|---------|---------|----------|-----------------|--------------|
| <b>2223032F58D</b>    | 30  | 31,75    | 47,8     | 58       | 63      | 3-20    | 50       | ER/32           | dx / r       |
| <b>2223032F58SX</b>   | 30  | 31,75    | 47,8     | 58       | 63      | 3-20    | 50       | ER/32           | sx / l       |
| <b>2223040F58D</b>    | 30  | 31,75    | 47,8     | 58       | 65      | 4-30    | 63       | ER/40           | dx / r       |
| <b>2223040F58SX</b>   | 30  | 31,75    | 47,8     | 58       | 65      | 4-30    | 63       | ER/40           | sx / l       |
| <b>22230EOP25F58D</b> | 30  | 31,75    | 47,8     | 58       | 70      | 2-25    | 60       | EOP/25          | dx / r       |
| <b>2224032F58D</b>    | 40  | 44,45    | 68,4     | 58       | 63      | 3-20    | 50       | ER/32           | dx / r       |
| <b>2224032F58SX</b>   | 40  | 44,45    | 68,4     | 58       | 63      | 3-20    | 50       | ER/32           | sx / l       |
| <b>2224040F58D</b>    | 40  | 44,45    | 68,4     | 58       | 65      | 4-30    | 63       | ER/40           | dx / r       |
| <b>2224040F58SX</b>   | 40  | 44,45    | 68,4     | 58       | 65      | 4-30    | 63       | ER/40           | sx / l       |
| <b>22240EOP25F58D</b> | 40  | 44,45    | 68,4     | 58       | 70      | 2-25    | 60       | EOP/25          | dx / r       |

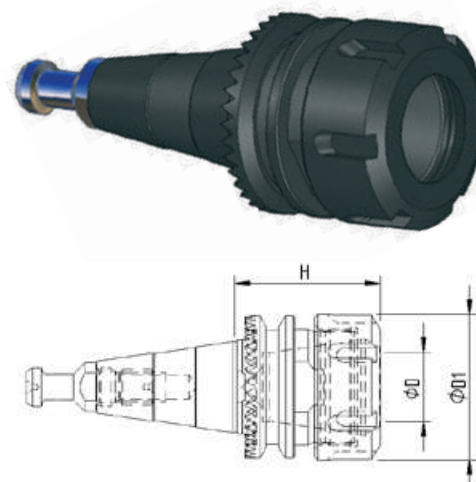
Per macchina / For machine: Esseteam, Uniteam, Tekteam  
BILANCIATI FINO A G.2,5 - 24.000 RPM a richiesta  
BALANCED TO 24,000 RPM at G.2,5 on request



### MANDRINI PORTAPINZE ATTACCO DIN 69871 FLANGIA DENTATA COLLET CHUCKS DIN 69871 WITH TOOTHED FLANGE

| ART.                  | ISO | H<br>mm | D<br>mm | D1<br>mm | Pinza<br>Collet | Rot.<br>Rev. |
|-----------------------|-----|---------|---------|----------|-----------------|--------------|
| <b>2223032SCMD</b>    | 30  | 55      | 3-20    | 50       | ER/32           | dx / r       |
| <b>2223032SCMSX</b>   | 30  | 55      | 3-20    | 50       | ER/32           | sx / l       |
| <b>2223040SCMD</b>    | 30  | 74      | 4-30    | 63       | ER/40           | dx / r       |
| <b>2223040SCMSX</b>   | 30  | 74      | 4-30    | 63       | ER/40           | sx / l       |
| <b>22230EOP25SCMD</b> | 30  | 70      | 2-25    | 60       | EOP/25          | dx / r       |

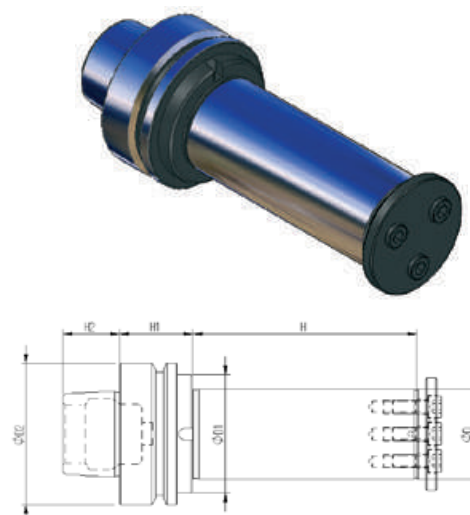
Per macchina / For machine: SCM, Morbidelli  
BILANCIATI FINO A G.2,5 - 24.000 RPM a richiesta  
BALANCED TO 24,000 RPM at G.2,5 on request



### MANDRINI CON ALBERO PORTAFRESE ATTACCO HSK DIN 69893 CHUCKS WITH END MILL ARBOR HSK DIN 69893

| ART.                | D2   | H2<br>mm | H1<br>mm | D<br>mm | H<br>mm | D1<br>mm |
|---------------------|------|----------|----------|---------|---------|----------|
| <b>22363F20L70</b>  | 63/F | 25       | 33       | 20      | 70      | 35       |
| <b>22363F30L70</b>  | 63/F | 25       | 33       | 30      | 70      | 45       |
| <b>22363F30L80</b>  | 63/F | 25       | 33       | 30      | 80      | 45       |
| <b>22363F30L100</b> | 63/F | 25       | 33       | 30      | 100     | 45       |
| <b>22363F30L150</b> | 63/F | 25       | 33       | 30      | 150     | 45       |
| <b>22363F35L70</b>  | 63/F | 25       | 33       | 35      | 70      | 50       |
| <b>22363F35L80</b>  | 63/F | 25       | 33       | 35      | 80      | 50       |
| <b>22363F35L100</b> | 63/F | 25       | 33       | 35      | 100     | 50       |
| <b>22363F35L150</b> | 63/F | 25       | 33       | 35      | 150     | 50       |
| <b>22363F40L70</b>  | 63/F | 25       | 33       | 40      | 70      | 53       |
| <b>22363F40L80</b>  | 63/F | 25       | 33       | 40      | 80      | 53       |
| <b>22363F40L100</b> | 63/F | 25       | 33       | 40      | 100     | 53       |
| <b>22363F40L150</b> | 63/F | 25       | 33       | 40      | 150     | 53       |

Per macchina / For machine: SCM, Morbidelli  
BILANCIATI FINO A G.2,5 - 24.000 RPM a richiesta  
BALANCED TO 24,000 RPM at G.2,5 on request



## MANDRINI PORTAFRESE MILLING CHUCKS

### MANDRINI CON ALBERO PORTAFRESE ATTACCO HSK DIN 69893 CHUCKS WITH END MILL ARBOR HSK DIN 69893

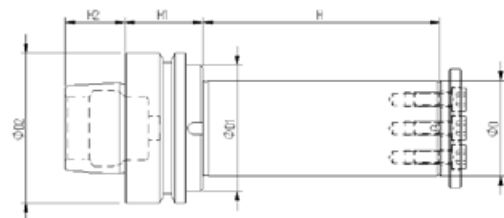
| ART.         | D2   | H2<br>mm | H1<br>mm | D<br>mm | H<br>mm | D1<br>mm |
|--------------|------|----------|----------|---------|---------|----------|
| 22250E20L70  | 50/E | 25       | 42       | 20      | 70      | 35       |
| 22250E30L70  | 50/E | 25       | 42       | 30      | 70      | 45       |
| 22250E30L80  | 50/E | 25       | 42       | 30      | 80      | 45       |
| 22250E30L100 | 50/E | 25       | 42       | 30      | 100     | 45       |
| 22250E30L150 | 50/E | 25       | 42       | 30      | 150     | 45       |
| 22250E35L70  | 50/E | 25       | 42       | 35      | 70      | 49       |
| 22250E35L80  | 50/E | 25       | 42       | 35      | 80      | 49       |
| 22250E35L100 | 50/E | 25       | 42       | 35      | 100     | 49       |
| 22250E35L150 | 50/E | 25       | 42       | 35      | 150     | 49       |
| 22263E20L70  | 63/E | 32       | 42       | 20      | 70      | 35       |
| 22263E30L70  | 63/E | 32       | 42       | 30      | 70      | 45       |
| 22263E30L80  | 63/E | 32       | 42       | 30      | 80      | 45       |
| 22263E30L100 | 63/E | 32       | 42       | 30      | 100     | 45       |
| 22263E30L150 | 63/E | 32       | 42       | 30      | 150     | 45       |
| 22263E35L70  | 63/E | 32       | 42       | 35      | 70      | 50       |
| 22263E35L80  | 63/E | 32       | 42       | 35      | 80      | 50       |
| 22263E35L100 | 63/E | 32       | 42       | 35      | 100     | 50       |
| 22263E35L150 | 63/E | 32       | 42       | 35      | 150     | 50       |
| 22263E40L70  | 63/E | 32       | 42       | 40      | 70      | 53       |
| 22263E40L80  | 63/E | 32       | 42       | 40      | 80      | 53       |
| 22263E40L100 | 63/E | 32       | 42       | 40      | 100     | 53       |
| 22263E40L150 | 63/E | 32       | 42       | 40      | 150     | 53       |

Per macchina / For machine: SCM, Uniteam



| ART.         | D2   | H2<br>mm | H1<br>mm | D<br>mm | H<br>mm | D1<br>mm |
|--------------|------|----------|----------|---------|---------|----------|
| 22250F20L70  | 50/F | 20       | 42       | 20      | 70      | 35       |
| 22250F30L70  | 50/F | 20       | 42       | 30      | 70      | 45       |
| 22250F30L80  | 50/F | 20       | 42       | 30      | 80      | 45       |
| 22250F30L100 | 50/F | 20       | 42       | 30      | 100     | 45       |
| 22250F30L150 | 50/F | 20       | 42       | 30      | 150     | 45       |
| 22250F35L70  | 50/F | 20       | 42       | 35      | 70      | 49       |
| 22250F35L80  | 50/F | 20       | 42       | 35      | 80      | 49       |
| 22250F35L100 | 50/F | 20       | 42       | 35      | 100     | 49       |
| 22250F35L150 | 50/F | 20       | 42       | 35      | 150     | 49       |

Per macchina / For machine: Biesse, SCM, Morbidelli, Eima, Dubus, Weeke



| ART.         | D2   | H2<br>mm | H1<br>mm | D<br>mm | H<br>mm | D1<br>mm |
|--------------|------|----------|----------|---------|---------|----------|
| 22263F20L70  | 63/F | 25       | 42       | 20      | 70      | 35       |
| 22263F30L70  | 63/F | 25       | 42       | 30      | 70      | 45       |
| 22263F30L80  | 63/F | 25       | 42       | 30      | 80      | 45       |
| 22263F30L100 | 63/F | 25       | 42       | 30      | 100     | 45       |
| 22263F30L150 | 63/F | 25       | 42       | 30      | 150     | 45       |
| 22263F35L70  | 63/F | 25       | 42       | 35      | 70      | 50       |
| 22263F35L80  | 63/F | 25       | 42       | 35      | 80      | 50       |
| 22263F35L100 | 63/F | 25       | 42       | 35      | 100     | 50       |
| 22263F35L150 | 63/F | 25       | 42       | 35      | 150     | 50       |
| 22263F40L70  | 63/F | 25       | 42       | 40      | 70      | 53       |
| 22263F40L80  | 63/F | 25       | 42       | 40      | 80      | 53       |
| 22263F40L100 | 63/F | 25       | 42       | 40      | 100     | 53       |
| 22263F40L150 | 63/F | 25       | 42       | 40      | 150     | 53       |

Per macchina / For machine: Biesse, Homag, Weeke, Ima (da 9/94), Eima, Busellato, Dubus

BILANCIATI FINO A G.2,5 - 24.000 RPM a richiesta  
BALANCED TO 24,000 RPM at G.2,5 on request

## MANDRINI PORTAFRESE MILLING CHUCKS

### MANDRINI CON ALBERO PORTAFRESE ATTACCO DIN 69871 CHUCKS WITH END MILL ARBOR ATTACH DIN 69871

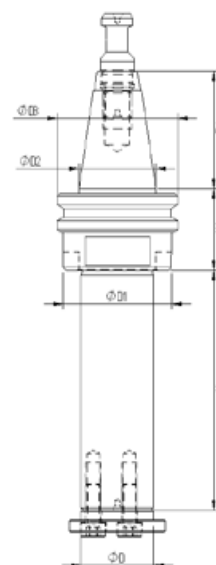
| ART.               | ISO | D2<br>mm | H2<br>mm | D3<br>mm | H1<br>mm | D<br>mm | H<br>mm | D1<br>mm |
|--------------------|-----|----------|----------|----------|----------|---------|---------|----------|
| <b>2223020L70</b>  | 30  | 31,75    | 47,8     | 50       | 35       | 20      | 70      | 35       |
| <b>2223030L70</b>  | 30  | 31,75    | 47,8     | 50       | 35       | 30      | 70      | 45       |
| <b>2223030L80</b>  | 30  | 31,75    | 47,8     | 50       | 35       | 30      | 80      | 45       |
| <b>2223030L100</b> | 30  | 31,75    | 47,8     | 50       | 35       | 30      | 100     | 45       |
| <b>2223030L150</b> | 30  | 31,75    | 47,8     | 50       | 35       | 30      | 150     | 45       |
| <b>2223035L70</b>  | 30  | 31,75    | 47,8     | 50       | 35       | 35      | 70      | 48       |
| <b>2223035L80</b>  | 30  | 31,75    | 47,8     | 50       | 35       | 35      | 80      | 48       |
| <b>2223035L100</b> | 30  | 31,75    | 47,8     | 50       | 35       | 35      | 100     | 48       |
| <b>2223035L150</b> | 30  | 31,75    | 47,8     | 50       | 35       | 35      | 150     | 48       |

Per macchina / For machine: Biesse, Cosmec, Homag, Maka, Bulleri, Alberti, Reichenbacher, Masterwood, Busellato



| ART.               | ISO | D2<br>mm | H2<br>mm | D3<br>mm | H1<br>mm | D<br>mm | H<br>mm | D1<br>mm |
|--------------------|-----|----------|----------|----------|----------|---------|---------|----------|
| <b>2224020L70</b>  | 40  | 44,45    | 68,4     | 63,55    | 35       | 20      | 70      | 35       |
| <b>2224030L70</b>  | 40  | 44,45    | 68,4     | 63,55    | 35       | 30      | 70      | 45       |
| <b>2224030L80</b>  | 40  | 44,45    | 68,4     | 63,55    | 35       | 30      | 80      | 45       |
| <b>2224030L100</b> | 40  | 44,45    | 68,4     | 63,55    | 35       | 30      | 100     | 45       |
| <b>2224030L150</b> | 40  | 44,45    | 68,4     | 63,55    | 35       | 30      | 150     | 45       |
| <b>2224035L70</b>  | 40  | 44,45    | 68,4     | 63,55    | 35       | 35      | 70      | 50       |
| <b>2224035L80</b>  | 40  | 44,45    | 68,4     | 63,55    | 35       | 35      | 80      | 50       |
| <b>2224035L100</b> | 40  | 44,45    | 68,4     | 63,55    | 35       | 35      | 100     | 50       |
| <b>2224035L150</b> | 40  | 44,45    | 68,4     | 63,55    | 35       | 35      | 150     | 50       |
| <b>2224040L70</b>  | 40  | 44,45    | 68,4     | 63,55    | 35       | 40      | 70      | 55       |
| <b>2224040L80</b>  | 40  | 44,45    | 68,4     | 63,55    | 35       | 40      | 80      | 55       |
| <b>2224040L100</b> | 40  | 44,45    | 68,4     | 63,55    | 35       | 40      | 100     | 55       |
| <b>2224040L150</b> | 40  | 44,45    | 68,4     | 63,55    | 35       | 40      | 150     | 55       |

Per macchina / For machine: SCM, Ima, Maka, Weeke, Stegherr, Reichenbacher



| ART.               | ISO | D2<br>mm | H2<br>mm | D3<br>mm | H1<br>mm | D<br>mm | H<br>mm | D1<br>mm |
|--------------------|-----|----------|----------|----------|----------|---------|---------|----------|
| <b>2233020L70</b>  | 30  | 31,75    | 47,8     | 46       | 35       | 20      | 70      | 35       |
| <b>2233030L70</b>  | 30  | 31,75    | 47,8     | 46       | 35       | 30      | 70      | 45       |
| <b>2233030L80</b>  | 30  | 31,75    | 47,8     | 46       | 35       | 30      | 80      | 45       |
| <b>2233030L100</b> | 30  | 31,75    | 47,8     | 46       | 35       | 30      | 100     | 45       |
| <b>2233030L150</b> | 30  | 31,75    | 47,8     | 46       | 35       | 30      | 150     | 45       |
| <b>2233035L70</b>  | 30  | 31,75    | 47,8     | 46       | 35       | 35      | 70      | 50       |
| <b>2233035L80</b>  | 30  | 31,75    | 47,8     | 46       | 35       | 35      | 80      | 50       |
| <b>2233035L100</b> | 30  | 31,75    | 47,8     | 46       | 35       | 35      | 100     | 50       |
| <b>2233035L150</b> | 30  | 31,75    | 47,8     | 46       | 35       | 35      | 150     | 50       |

Per macchina / For machine: CMS

BILANCIATI FINO A G.2,5 - 24.000 RPM a richiesta  
BALANCED TO 24,000 RPM at G.2,5 on request

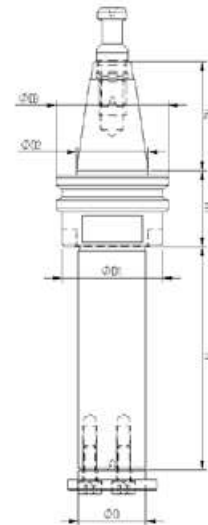


## MANDRINI PORTAFRESE MILLING CHUCKS

### MANDRINI CON ALBERO PORTAFRESE ATTACCO DIN 69871 CHUCKS WITH END MILL ARBOR DIN 69871

| ART.        | ISO | D2<br>mm | H2<br>mm | D3<br>mm | H1<br>mm | D<br>mm | H<br>mm | D1<br>mm |
|-------------|-----|----------|----------|----------|----------|---------|---------|----------|
| 2243020L70  | 30  | 31,75    | 47,8     | 58       | 35       | 20      | 70      | 35       |
| 2243030L70  | 30  | 31,75    | 47,8     | 58       | 35       | 30      | 70      | 45       |
| 2243030L80  | 30  | 31,75    | 47,8     | 58       | 35       | 30      | 80      | 45       |
| 2243030L100 | 30  | 31,75    | 47,8     | 58       | 35       | 30      | 100     | 45       |
| 2243030L150 | 30  | 31,75    | 47,8     | 58       | 35       | 30      | 150     | 45       |
| 2243035L70  | 30  | 31,75    | 47,8     | 58       | 35       | 35      | 70      | 50       |
| 2243035L80  | 30  | 31,75    | 47,8     | 58       | 35       | 35      | 80      | 50       |
| 2243035L100 | 30  | 31,75    | 47,8     | 58       | 35       | 35      | 100     | 50       |
| 2243035L150 | 30  | 31,75    | 47,8     | 58       | 35       | 35      | 150     | 50       |
| 2244020L70  | 40  | 44,45    | 68,4     | 58       | 35       | 20      | 70      | 35       |
| 2244030L70  | 40  | 44,45    | 68,4     | 58       | 35       | 30      | 70      | 45       |
| 2244030L80  | 40  | 44,45    | 68,4     | 58       | 35       | 30      | 80      | 45       |
| 2244030L100 | 40  | 44,45    | 68,4     | 58       | 35       | 30      | 100     | 45       |
| 2244030L150 | 40  | 44,45    | 68,4     | 58       | 35       | 30      | 150     | 45       |
| 2244035L70  | 40  | 44,45    | 68,4     | 58       | 35       | 35      | 70      | 50       |
| 2244035L80  | 40  | 44,45    | 68,4     | 58       | 35       | 35      | 80      | 50       |
| 2244035L100 | 40  | 44,45    | 68,4     | 58       | 35       | 35      | 100     | 50       |
| 2244035L150 | 40  | 44,45    | 68,4     | 58       | 35       | 35      | 150     | 50       |
| 2244040L70  | 40  | 44,45    | 68,4     | 58       | 35       | 40      | 70      | 55       |
| 2244040L80  | 40  | 44,45    | 68,4     | 58       | 35       | 40      | 80      | 55       |
| 2244040L100 | 40  | 44,45    | 68,4     | 58       | 35       | 40      | 100     | 55       |
| 2244040L150 | 40  | 44,45    | 68,4     | 58       | 35       | 40      | 150     | 55       |

Per macchina / For machine: Esseteam, Uniteam, Tekteam  
BILANCIATI FINO A G.2,5 - 24.000 RPM a richiesta  
BALANCED TO 24,000 RPM at G.2,5 on request

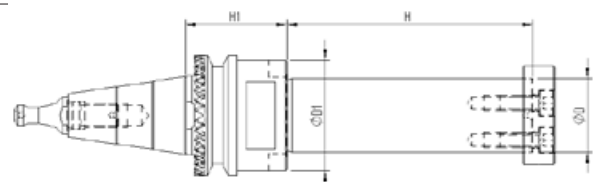


16

### MANDRINI CON ALBERO PORTAFRESE FLANGIA DENTATA CHUCKS WITH END MILL ARBOR TOOTHED FLANGE

| ART.           | ISO | D<br>mm | H<br>mm | D1<br>mm | H1<br>mm |
|----------------|-----|---------|---------|----------|----------|
| 2223020L70SCM  | 30  | 20      | 70      | 35       | 41       |
| 2223030L70SCM  | 30  | 30      | 70      | 45       | 41       |
| 2223030L80SCM  | 30  | 30      | 80      | 45       | 41       |
| 2223030L100SCM | 30  | 30      | 100     | 45       | 41       |
| 2223030L150SCM | 30  | 30      | 150     | 45       | 41       |
| 2223035L70SCM  | 30  | 35      | 70      | 50       | 41       |
| 2223035L80SCM  | 30  | 35      | 80      | 50       | 41       |
| 2223035L100SCM | 30  | 35      | 100     | 50       | 41       |
| 2223035L150SCM | 30  | 35      | 150     | 50       | 41       |
| 2223040L70SCM  | 30  | 40      | 70      | 53       | 41       |
| 2223040L80SCM  | 30  | 40      | 80      | 53       | 41       |
| 2223040L100SCM | 30  | 40      | 100     | 53       | 41       |
| 2223040L150SCM | 30  | 40      | 150     | 53       | 41       |

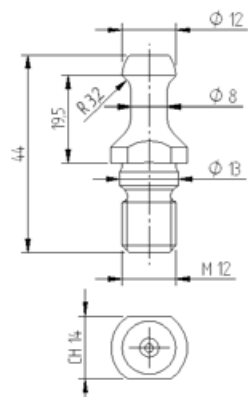
Per macchina / For machine: SCM, Morbidelli  
BILANCIATI FINO A G.2,5 - 24.000 RPM a richiesta  
BALANCED TO 24,000 RPM at G.2,5 on request



**RICAMBI  
SPARE PARTS**

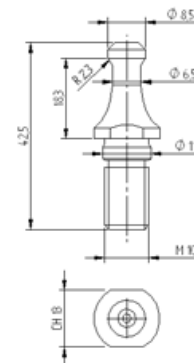
**TIRANTI PER MANDRINI  
PULL STUDS FOR CHUCKS**

**ART.  
ISO30BS**



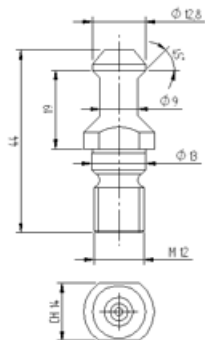
Per macchina / For machine: Elettromandri HSD, Biesse, Masterwood da fine 1999 / from 1999, Cosmec, etc

**ART.  
ISO30SCM**



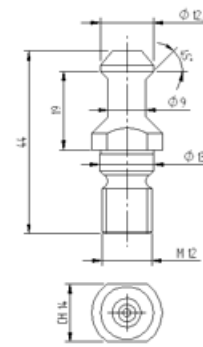
Per macchina / For machine: SCM, Morbidelli

**ART.  
ISO30CMS**



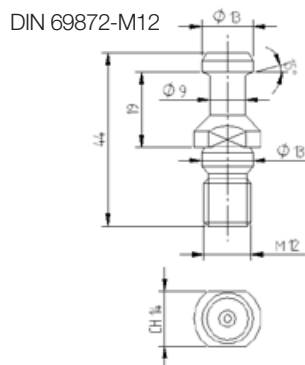
Per macchina / For machine: CMS

**ART.  
ISO30GC**



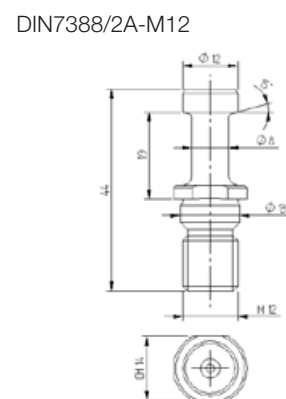
Per macchina / For machine: Elettromandri G. Colombo, Alberti, Masterwood fino a 1999 / from 1999

**ART.  
DIN3015SF**

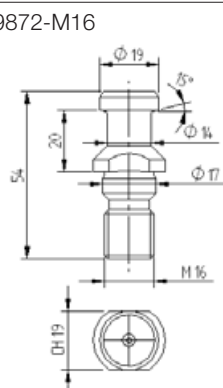


Per macchina/For machine: Elettromandri Elte, Ima, Maka, Weeke, Bulleri, Reichenbacher, Busellato, Esseteam, etc

**ART.  
TC3015SF**

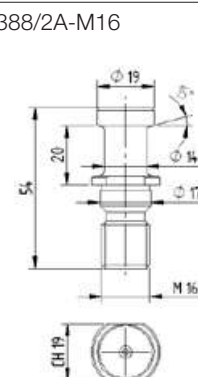


**ART.  
DIN4015SF**



Per macchina / For machine: Ima, Maka, Reichenbacher, Uniteam, Tekteam, Esseteam, etc

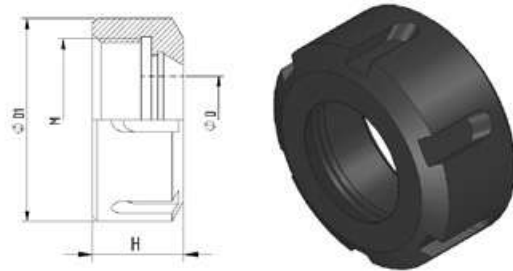
**ART.  
TC4015SF**



## RICAMBI SPARE PARTS

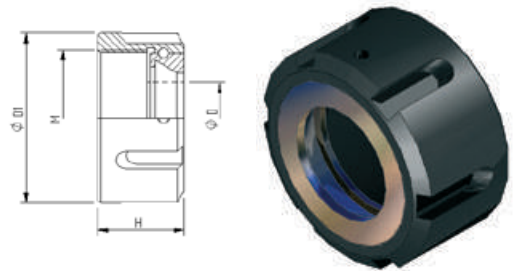
### GHIERE PER PINZE ER DIN 6499 NUTS FOR COLLETS ER DIN 6499

| ART.                | H mm | ER | D mm | M       | D1 mm | Rot. Rev. |
|---------------------|------|----|------|---------|-------|-----------|
| <b>EPR32120GC</b>   | 22,5 | 32 | 3-20 | M40x1,5 | 50    | dx / r    |
| <b>EPR32120GCSX</b> | 22,5 | 32 | 3-20 | M40x1,5 | 50    | sx / l    |
| <b>EPR40120GC</b>   | 25,5 | 40 | 4-30 | M50x1,5 | 63    | dx / r    |
| <b>EPR40120GCSX</b> | 25,5 | 40 | 4-30 | M50x1,5 | 63    | sx / l    |



### GHIERE PER PINZE ER DIN 6499 CON SFERE NUTS FOR COLLETS ER DIN 6499 WITH BEARING BALLS

| ART.             | H mm | ER | D mm | M       | D1 mm | Rot. Rev. |
|------------------|------|----|------|---------|-------|-----------|
| <b>EPR32130G</b> | 26   | 32 | 3-20 | M40x1,5 | 50    | dx / r    |
| <b>EPR40130G</b> | 29   | 40 | 4-30 | M50x1,5 | 63    | dx / r    |

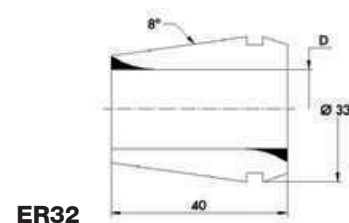


### PINZE ER DIN 6499/B COLLETS ER DIN 6499/B

#### ER32

| ART.            | D mm |
|-----------------|------|
| <b>EPR32030</b> | 3    |
| <b>EPR32040</b> | 4    |
| <b>EPR32050</b> | 5    |
| <b>EPR32060</b> | 6    |
| <b>EPR32070</b> | 7    |
| <b>EPR32080</b> | 8    |
| <b>EPR32090</b> | 9    |
| <b>EPR32100</b> | 10   |
| <b>EPR32110</b> | 11   |

| ART.            | D mm |
|-----------------|------|
| <b>EPR32120</b> | 12   |
| <b>EPR32130</b> | 13   |
| <b>EPR32140</b> | 14   |
| <b>EPR32150</b> | 15   |
| <b>EPR32160</b> | 16   |
| <b>EPR32170</b> | 17   |
| <b>EPR32180</b> | 18   |
| <b>EPR32190</b> | 19   |
| <b>EPR32200</b> | 20   |

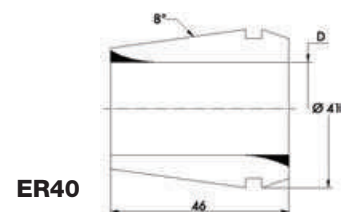


ER32

#### ER40

| ART.            | D mm |
|-----------------|------|
| <b>EPR40030</b> | 3    |
| <b>EPR40040</b> | 4    |
| <b>EPR40050</b> | 5    |
| <b>EPR40060</b> | 6    |
| <b>EPR40070</b> | 7    |
| <b>EPR40080</b> | 8    |
| <b>EPR40090</b> | 9    |
| <b>EPR40100</b> | 10   |
| <b>EPR40110</b> | 11   |
| <b>EPR40120</b> | 12   |
| <b>EPR40130</b> | 13   |
| <b>EPR40140</b> | 14   |
| <b>EPR40150</b> | 15   |
| <b>EPR40160</b> | 16   |

| ART.            | D mm |
|-----------------|------|
| <b>EPR40170</b> | 17   |
| <b>EPR40180</b> | 18   |
| <b>EPR40190</b> | 19   |
| <b>EPR40200</b> | 20   |
| <b>EPR40210</b> | 21   |
| <b>EPR40220</b> | 22   |
| <b>EPR40230</b> | 23   |
| <b>EPR40240</b> | 24   |
| <b>EPR40250</b> | 25   |
| <b>EPR40260</b> | 26   |
| <b>EPR40270</b> | 27   |
| <b>EPR40280</b> | 28   |
| <b>EPR40290</b> | 29   |
| <b>EPR40300</b> | 30   |



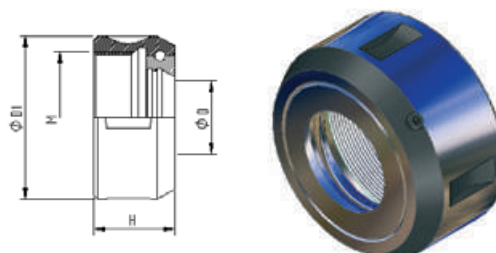
ER40



**RICAMBI  
SPARE PARTS**

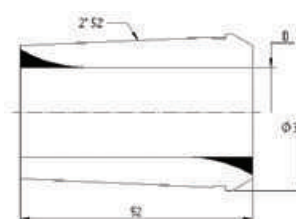
**GHIERA PER PINZE EOP DIN 6388 CON SFERE  
NUT FOR COLLETS EOP DIN 6388 WITH BEARING BALLS**

| ART.             | H mm | EOP | D mm | M     | D1 mm | Rot. Rev. |
|------------------|------|-----|------|-------|-------|-----------|
| <b>EOP25130G</b> | 30   | 25  | 2-25 | M48x2 | 60    | dx / r    |



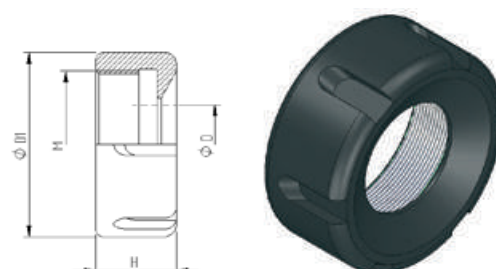
**PINZE EOP DIN 6388/B / COLLETS EOP DIN 6388/B**

| ART.            | D mm | ART.            | D mm |
|-----------------|------|-----------------|------|
| <b>EOP25025</b> | 2,5  | <b>EOP25140</b> | 14   |
| <b>EOP25030</b> | 3    | <b>EOP25145</b> | 14,5 |
| <b>EOP25035</b> | 3,5  | <b>EOP25150</b> | 15   |
| <b>EOP25040</b> | 4    | <b>EOP25155</b> | 15,5 |
| <b>EOP25045</b> | 4,5  | <b>EOP25160</b> | 16   |
| <b>EOP25050</b> | 5    | <b>EOP25165</b> | 16,5 |
| <b>EOP25055</b> | 5,5  | <b>EOP25170</b> | 17   |
| <b>EOP25060</b> | 6    | <b>EOP25175</b> | 17,5 |
| <b>EOP25065</b> | 6,5  | <b>EOP25180</b> | 18   |
| <b>EOP25070</b> | 7    | <b>EOP25185</b> | 18,5 |
| <b>EOP25075</b> | 7,5  | <b>EOP25190</b> | 19   |
| <b>EOP25080</b> | 8    | <b>EOP25195</b> | 19,5 |
| <b>EOP25085</b> | 8,5  | <b>EOP25200</b> | 20   |
| <b>EOP25090</b> | 9    | <b>EOP25205</b> | 20,5 |
| <b>EOP25095</b> | 9,5  | <b>EOP25210</b> | 21   |
| <b>EOP25100</b> | 10   | <b>EOP25215</b> | 21,5 |
| <b>EOP25105</b> | 10,5 | <b>EOP25220</b> | 22   |
| <b>EOP25110</b> | 11   | <b>EOP25225</b> | 22,5 |
| <b>EOP25115</b> | 11,5 | <b>EOP25230</b> | 23   |
| <b>EOP25120</b> | 12   | <b>EOP25235</b> | 23,5 |
| <b>EOP25125</b> | 12,5 | <b>EOP25240</b> | 24   |
| <b>EOP25130</b> | 13   | <b>EOP25245</b> | 24,5 |
| <b>EOP25135</b> | 13,5 | <b>EOP25250</b> | 25   |



**GHIERE ETS32 - ETS40 / NUTS ETS32 - ETS40**

| ART.               | H mm | ETS | D mm | M       | D1 mm | Rot. Rev. |
|--------------------|------|-----|------|---------|-------|-----------|
| <b>ETS32120G</b>   | 22,5 | 32  | 3-20 | M40x1,5 | 50    | dx / r    |
| <b>ETS32120GSX</b> | 22,5 | 32  | 3-20 | M40x1,5 | 50    | sx / l    |
| <b>ETS40120G</b>   | 26   | 40  | 4-30 | M50x1,5 | 63    | dx / r    |
| <b>ETS40120GSX</b> | 26   | 40  | 4-30 | M50x1,5 | 63    | sx / l    |



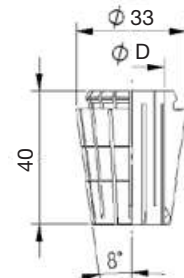
## RICAMBI SPARE PARTS

### PINZE ETS32 - ETS40 / COLLETS ETS32- ETS40

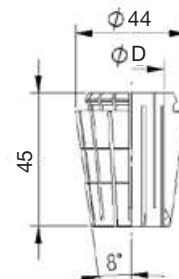
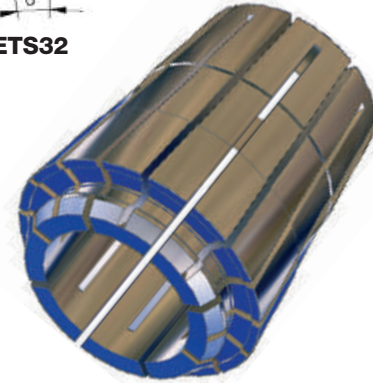
#### ETS32

| ART.     | D mm |
|----------|------|
| ETS32030 | 3    |
| ETS32040 | 4    |
| ETS32050 | 5    |
| ETS32060 | 6    |
| ETS32070 | 7    |
| ETS32080 | 8    |
| ETS32090 | 9    |
| ETS32100 | 10   |
| ETS32110 | 11   |

| ART.     | D mm |
|----------|------|
| ETS32120 | 12   |
| ETS32130 | 13   |
| ETS32140 | 14   |
| ETS32150 | 15   |
| ETS32160 | 16   |
| ETS32170 | 17   |
| ETS32180 | 18   |
| ETS32190 | 19   |
| ETS32200 | 20   |



ETS32



ETS40

#### ETS40

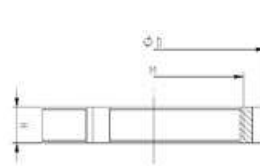
| ART.     | D mm |
|----------|------|
| ETS40040 | 4    |
| ETS40050 | 5    |
| ETS40060 | 6    |
| ETS40070 | 7    |
| ETS40080 | 8    |
| ETS40090 | 9    |
| ETS40100 | 10   |
| ETS40110 | 11   |
| ETS40120 | 12   |
| ETS40130 | 13   |
| ETS40140 | 14   |
| ETS40150 | 15   |

| ART.     | D mm |
|----------|------|
| ETS40160 | 16   |
| ETS40170 | 17   |
| ETS40180 | 18   |
| ETS40190 | 19   |
| ETS40200 | 20   |
| ETS40210 | 21   |
| ETS40220 | 22   |
| ETS40230 | 23   |
| ETS40240 | 24   |
| ETS40250 | 25   |
| ETS40260 | 26   |

### GHIERE DI CONTRASTO PER MANDRINI PORTAPINZE SPACERS FOR COLLET CHUCKS

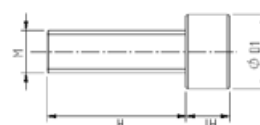
| ART.         | H mm | D mm | M       | Rot. Rev. |
|--------------|------|------|---------|-----------|
| EPR32150GC   | 8    | 50   | M40X1,5 | dx / r    |
| EPR32150GCSX | 8    | 50   | M40X1,5 | sx / l    |
| EPR40150GC   | 8    | 63   | M50X1,5 | dx / r    |
| EPR40150GCSX | 8    | 63   | M50X1,5 | sx / l    |

Per macchina / For machine: Uniteam, Tekteam, Esseteam



### VITI DI BLOCCAGGIO PER FLANGIA ARBOR SCREWS

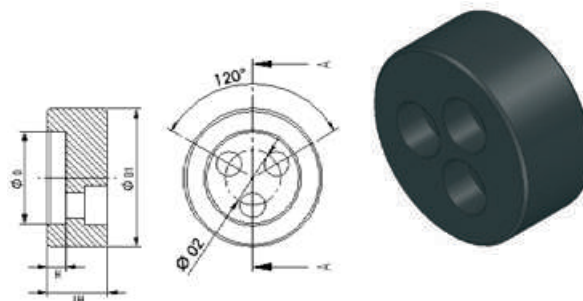
| ART.    | H1 mm | H mm | M  | D1 mm |
|---------|-------|------|----|-------|
| VIBLOM5 | 5     | 16   | M5 | 8,5   |
| VIBLOM6 | 6     | 16   | M6 | 10    |



**RICAMBI  
SPARE PARTS**

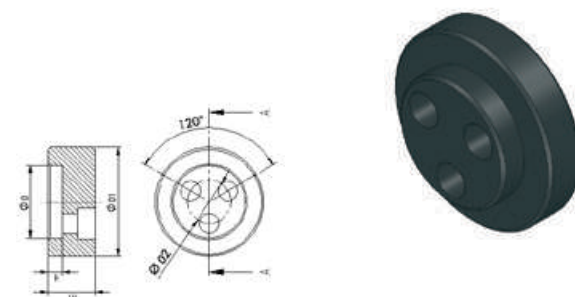
**FLANGE DI BLOCCAGGIO RIDOTTA  
REDUCED LOCKING FLANGES**

| ART.            | H1<br>mm | H<br>mm | D<br>mm | D1<br>mm | D2<br>mm |
|-----------------|----------|---------|---------|----------|----------|
| <b>FLABRI20</b> | 13       | 4       | 20      | 30       | 12       |
| <b>FLABRI25</b> | 13       | 4       | 25      | 35       | 16       |
| <b>FLABRI30</b> | 13       | 4       | 30      | 40       | 20       |
| <b>FLABRI35</b> | 13       | 4       | 35      | 45       | 24       |
| <b>FLABRI40</b> | 13       | 4       | 40      | 50       | 28       |



**FLANGE DI BLOCCAGGIO ESPANSA  
EXPANDED LOCKING FLANGES**

| ART.            | H1<br>mm | H<br>mm | D<br>mm | D1<br>mm | D2<br>mm |
|-----------------|----------|---------|---------|----------|----------|
| <b>FLABES20</b> | 10       | 4       | 20      | 30       | 12       |
| <b>FLABES25</b> | 10       | 4       | 25      | 35       | 16       |
| <b>FLABES30</b> | 9        | 4       | 30      | 40       | 20       |
| <b>FLABES35</b> | 9        | 4       | 35      | 45       | 24       |
| <b>FLABES40</b> | 9        | 4       | 40      | 50       | 28       |



**CHIAVI PER GHIERA / NUT WRENCHES**

| ART.              | Ghiera<br>Nut |
|-------------------|---------------|
| <b>EPR32180CH</b> | EPR32120G     |
| <b>EPR40180CH</b> | EPR40120G     |



| ART.               | Ghiera<br>Nut |
|--------------------|---------------|
| <b>EOP25180CHS</b> | EOP25130G     |



**SMONTACONI A RUOTA LIBERA  
TOOL SETTING STANDS**

| ART.             | HSK |
|------------------|-----|
| <b>HSK40SMRL</b> | 40  |
| <b>HSK50SMRL</b> | 50  |
| <b>HSK63SMRL</b> | 63  |

